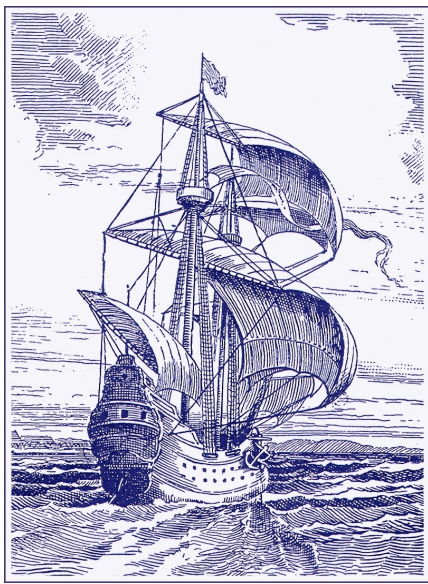


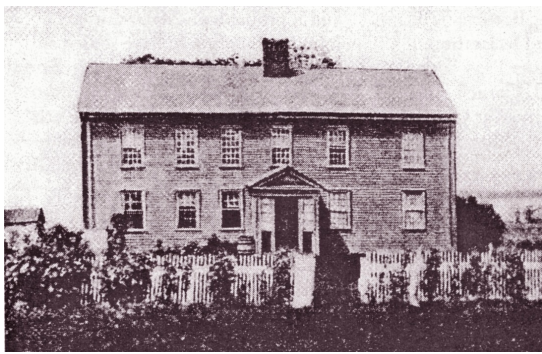
A “Kissin’ Cousins”

Descent to Amy Elizabeth Dowdey



Thomas Cornell; b. county of Essex, England, ca. 1595, d. Portsmouth, RI, ca. 1655. Thomas came to America with his wife and family about 1638, and is first found in Boston records. He followed his friend Rogers Williams to Portsmouth about 1640 and other Quakers to New Amsterdam about 1642. During an Indian uprising in 1643 Cornell’s neighbor Anne Hutchinson (the Antinomian martyr) was killed, Cornell’s property was burned, and he was forced to flee to Portsmouth. In 1646 he was granted 100 acres by the town of Portsmouth “on the south side of the Wading River,” where he built a house called “The Homestead.” Thomas and Rebecca were buried there, and the home remained in the Cornell family until the late 19th century.

Rebecca (Briggs?); b. prob. county of Essex, England, 1600, d. Portsmouth, RI, 1673. According to Quaker Records, Rebecca “was killed strangely at Portsmouth in her own dwelling house, was twice viewed by the Coroner’s Inquest, dug up and buried again by her husband’s grave in their own land.” Her son Thomas was charged with her murder, convicted and executed, though she most likely fell asleep and set her self on fire. Among the descendants of Thomas and Rebecca are Lizzie Borden, actresses Betty Grable and Marilyn Monroe, Cornell University founder Ezra Cornell, computer mogul Bill Gates III (world’s richest man), Declaration of Independence signer William Ellery, Jr., US First Ladies Frances (Folsom) Cleveland and Elizabeth (Kortright) Monroe, and US Presidents Richard Nixon and Jimmy Carter.



The Cornell home, West Main Road, Portsmouth, RI (where Rebecca Cornell died).



St. Nicholas’ Church, Great Yarmouth, Norfolk, consecrated in 1119; it is England’s largest parish church.

